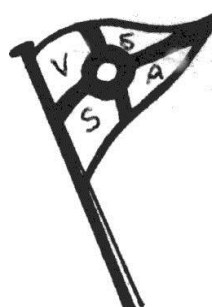




Notice of Race
For the
2014/2015
70th Vee Ess 15'Skiff
Australian Championship

**The Vee Ess Sailing Association Inc
in conjunction with
Gosford Sailing Club
Invites entries to race on
Brisbane Waters
January 5th to 9th 2015**

**Web sites: www.vs.asn.au
www.gossail.com.au**



The Organising Authority for this Series is the Gosford Sailing Club In conjunction with the Vee Ess Sailing Association Inc.

1 RULES

- 1.1 The Championship will be governed by the rules as defined in the 2013 – 2016 Racing Rules of Sailing (RRS) of the International Sailing Federation (ISAF) as amended.
- 1.2 The rules and bi-laws of the Vee Ess Sailing Association shall apply except as altered by the Sailing Instructions or this Notice of Race.
- 1.3 The Special Regulations of Yachting Australia Part 2 shall apply.
- 1.4 The Prescriptions of Yachting Australia shall apply
- 1.5 If there is conflict between any of the rules or regulations, other than RRS, the Sailing Instructions will prevail.

2 ADVERTISING

- 2.1 This is a Class A Event in accordance with ISAF Regulation 20

3 ELIGIBILITY AND ENTRY

- 3.1 The regatta is open to all boats of the Vee Ess Class that have registered their capitation for the current season with the Registrar of the V.S.S.A. Inc.
- 3.2 All competitors must be financial members of the VSSA Inc. The registrar may accept membership of the VSSA Inc. after receiving a completed Membership Application and prescribed membership fee at least ninety minutes before the start of the day's racing.
- 3.3 Each Vee Ess whose entry is accepted shall be sailed by the skipper & crew nominated on the Entry Form. In special circumstances only, the Race Committee may, at their discretion, allow for changes of this skipper & crew where a legitimate reason exists. In all circumstances the replacement sailors shall meet the eligibility requirements of the series.

The intention of this clause is to ensure fair competition and this will be considered if any crew application change is lodged. The decision of the Race Committee is final.

- 3.4 Eligible boats may enter on the attached Entry Form which should be lodged with the Vee Ess Race Secretary V.S.S.A P.O. Box 112 Toronto NSW 2283 by 1200 hours on the 5th January 2015 with the required fee.

4 FEES

- 4.1 Entry Fee for lodgement by the 5th January 2015 is \$150.00 per boat
Entry fees can either be by cheque made payable to the Vee Ess Sailing association
or by a direct deposit to the association BSB # 650000 A/C #9799465618

5 SCHEDULE OF EVENTS

- 5.1 The Australian Championships will consist of Ten (10) races scheduled over Five (5) days of racing.

- 5.2 The events are scheduled for:

Date	Day	Time	Event
5 th January	Monday	1100 - 1230	Measurement and Registration
		1240	Competitors Championship Meeting and Course ballot
		1420	Race 1 warning Signal Race 2 ASAP after race 1
		1730	Daily presentation and course ballot Welcome BBQ
6 th January	Tuesday	1100	VS association meeting
		1420	Race 3 warning Signal Race 4 ASAP after race 3
		1700	Daily presentation and course ballot
7 th January	Wednesday	1420	Race 5 warning Signal Race 6 ASAP after race 5
		1700	Daily presentation and course ballot
8 th January	Thursday	1325	Race 7 warning Signal Race 8 ASAP after race 7
		1700	Daily presentation and course ballot
9 th January	Friday	1325	Race 9 warning Signal Race 10 ASAP after race 9
		1610	Last Warning Signal
		1830	Presentation dinner @GSC

- 5.3 The Race Committee may alter the schedule and number of races sailed at any time but will only advance the Championship by not more than one (1) race per day
- 5.4 If any heats are postponed there will be consideration of sailing an early race. Any such race will commence no earlier than 1200hrs. Competitors will be advised no later than 1800hrs the day prior to any race starting earlier than that nominated.
- 5.5 No warning signal will be made after 1610hrs on Friday 9th January.

6 REGISTRATION AND MEASUREMENT

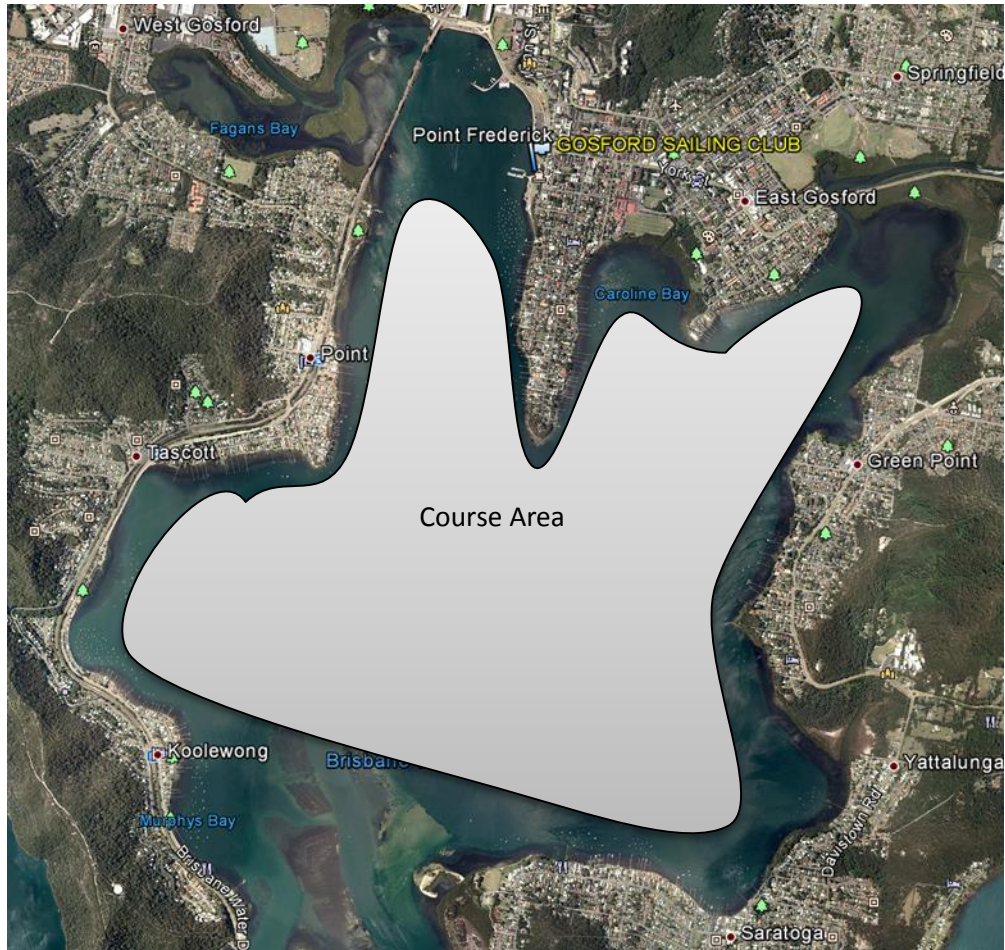
- 6.1 Eligible boats shall register with the Organising Authority at the GSC.
- 6.2 Time at registration is allotted for sail & other measurement checks requested by competitors. Random checks may be made at any time throughout the regatta to check compliance of items such as tow rings, pole end caps, black bands, proof of sail measurement, etc.

7 SAILING INSTRUCTIONS

- 7.1 Sailing Instructions will be available on the GCS website on Friday prior to the first scheduled race or upon registration at the Gosford Sailing Club.

8 RACING AREA

8.1 The Course Area



- 8.2 The races will be conducted on Brisbane Waters off Gosford Sailing Club. Competitors are advised that the water north of the cardinal mark at Point Frederick is extremely shallow.

9 COURSES

- 9.1 Race courses will be a Windward/Leeward configuration all as described in the Sailing Instructions.

10 SCORING

- 10.1 The Low points score system as described in appendix A, A4.1 RRS 2013 -2016
- 10.2 Ten (10) races are scheduled of which Five (5) completed races are required to constitute the Championship.
- 10.3 Each boat's score will be the total of her race scores with the following discards applied depending on the number of races completed.

- 10.4 When fewer than six (6) races have been completed, a boat's series score will be the total of her race scores.
- 10.5 When from six (6) to eight (8) races have been completed, a boat's series score will be the total of her race scores excluding her worst score
- 10.6 When nine (9) or more races have been completed, a boat's series score will be the total of her race scores excluding her two worst scores.
- 10.7 The VSSA handicap system will apply for handicap results and scoring. The VSSA handicap committee reserves the right to change a boat's handicap at any time and without notice.

11 PROTEST COMMITTEE

- 11.1 The Championship shall have a Protest committee which will be appointed by the Organising Authority

12 SUPPORT BOATS

- 12.1 Team leaders, coaches, other support personnel and support boats shall stay outside areas where boats are racing from the time of the warning signal until all boats have finished or the Race Committee signals a postponement, general recall or abandonment. Specific coach and support boat instructions will be stated in the Sailing Instructions.
- 12.2 Support boats must be registered with the Organising Authority and shall be marked with identifying flags issued by the Organising Authority.

13 ENTRY DISCLAIMER AND RISK WARNING

- 13.1 It is the competitor's decision to enter the Event or to start and continue in any race. Competitors shall accept that their participation in the Event is at their exclusive risk in every respect. By way of entry in the Event competitors must indemnify the Organising Authority their officers, members, staff and agents in respect to all claims and demands of whatever nature which may be made upon them in connection with or howsoever arising from their participation or intended participation in the Event.
- 13.2 This RISK WARNING is issued jointly by Gosford Sailing Club and NSW Maritime, pursuant to the Civil Liability Act 2002 to all persons wishing to participate in the sailing activities conducted by Gosford Sailing Club.

Participants are warned that, regardless of the precautions, which might be taken by reasonable and experienced persons, sailing can be a dangerous pursuit and participants are exposed to significant risk of property damage, physical harm and possibly death.

As an indication, these risks may include, but are not limited to:

- The extremes of weather and sea conditions.
- The potential that control of vessels may be lost, resulting in collision with objects and other vessels.
- The sudden movement of the vessel at any time and the possibility that participants may fall or be thrown overboard, resulting in drowning.
- The possibility that participants may be injured by equipment on the vessel.
- The absence of immediate medical care and the likelihood that significant delays may occur before medical care is available.

Exposure to the elements for extended periods.

Gosford Sailing Club and NSW Maritime also warn participants that regardless of their best intentions, they may be unable to render assistance to participants who are in distress. Participants are warned to consider the above risks and all other risks before deciding to participate in any sailing event with Gosford Sailing Club.

Participants are also advised that although Gosford Sailing Club is covered by third party liability insurance, this cover DOES NOT extend to participants. Any participant who considers they have a need for insurance must make their own private arrangements with an insurer. Membership of a sailing club affiliated with Yachting NSW entitles you to personal accident insurance cover.

14 INSURANCE

- 14.1. All yachts competing in the Regatta are required to carry current Third Party Personal and Property Liability Insurance cover of a minimum recommended Aud \$5,000,000 or equivalent thereof in any other currency for any one accident.
- 14.2. All owners/competitors who sign the Entry Form are deemed to have made a declaration that they hold such cover. Competitors must produce evidence of such insurance at registration.
- 14.3. Each Skipper and/or co-skipper is liable for any third party property and personal injury claims.

15 PRIZES

- 15.1 Prizes and Trophies will include:

Prizes will be awarded to the overall winners of the National Title and the National Handicap Title. A perpetual trophy will also be presented to the champion crew of both Titles.

Prizes will also be awarded to placegetters of both titles.

The Coal Board Shield will be presented to the winner of the last heat of the series on scratch.

Daily prizes will be presented in the clubhouse after the completion of the day's racing. For each heat prizes will be awarded to the scratch & handicap winners.

- 15.2 Other prizes may be awarded at the discretion of the Organising Authority.

16 SUPPORT BOAT BERTHS AND TRAILOR PARKING

- 16.1 The Gosford Sailing Club will provide berths without charge to all competitors support and support boats.
- 16.2 For Marina berthing outside the Regatta dates please contact the GSC Marina Manager Peter Walsh for bookings
- 16.3 Trailers maybe stored at the Southern end of the Park at the GSC

17 FURTHER INFORMATION

For further information, Visit the VSSA website www.vs.asn.au or
please contact: Regatta Coordinator Vee Ess Race Sectary:
John Hodda jhodda@ausgrid.com.au
OR the GSC Sailing Manager Peter Walsh on 0448 257 216

EXTRA INFORMATION

Temporary Membership - Temporary Membership of the Gosford Sailing Club has been extended to all visiting Sailors during the Championship.

Accommodation

There are a number of motels in Gosford, but please book early, since they are frequently booked for functions. These are relatively close to the Gosford Sailing Club:

Ibis Hotel	- 02 43257692	Gosford Palms Motor Inn	-02 4323-1211
Galaxy Motel	-02 4323-1711	Gosford Best Western Motel	-02 4323-1333
Hotel Gosford	- 024324-1634	Quality Inn (The Willows)	-02 4328-4666
Bermuda Motor Inn	-024324366		

SOCIAL EVENTS AND CATERING

The Club Canteen will be open from 0800 for breakfast and lunches on the days of the Regatta

A Free Sailors Sausage Sizzle BBQ will be available after sailing on each day of the Regatta

**Vee Ess 15' Skiff
2014-2015 National Championships**

FORM OF ENTRY

Organising authority: The Vee Ess Sailing Association Inc.

**To: The Race Secretary
V.S.S.A. Inc.
P.O. Box 112
TORONTO NSW 2283.**

Please accept this entry for the 2014-2015 National Championship Series for the Vee Ess 15' skiff Class.

January 5 – January 9, 2015. Gosford Sailing Club

\$150 entry fee per boat applies.

REGISTERED BOAT NAME: _____

REGISTRATION NUMBER: _____

COLOUR PATCH ON MAINSAIL: if applicable please sketch an approximation.

HOME CLUB _____

OWNER NAME & ADDRESS : _____

SKIPPER'S NAME: _____ **YACHTING AUS #:** _____

SHEETHANDS NAME: _____ **YACHTING AUS #:** _____

FORWARDHAND'S NAME: _____ **YACHTING AUS #:** _____

DETAILS OF INSURANCE POLICY

Company: _____ **Policy Number:** _____

Public Liability Insurance Cover: \$ _____ **Expiry Date:** _____

I have read, understood, acknowledge and agree to the Conditions of Entry on the final page of this entry form. Please sign below

Signed : _____ **Owner/Skipper**

Dated: ____/____/____ **(office use only : _____ reg.)**